

**PROPOSED NEW WORK
AT DRIVE-THRU SERVICE WINDOW:**

NEW MEND PANEL WITH INTERCOM.
ILLUMINATED MEND SIGN, TO
REPLACE EXISTING.

NEW PAINTED DRIVE-THRU LANE
MARKING ON PAVEMENT.

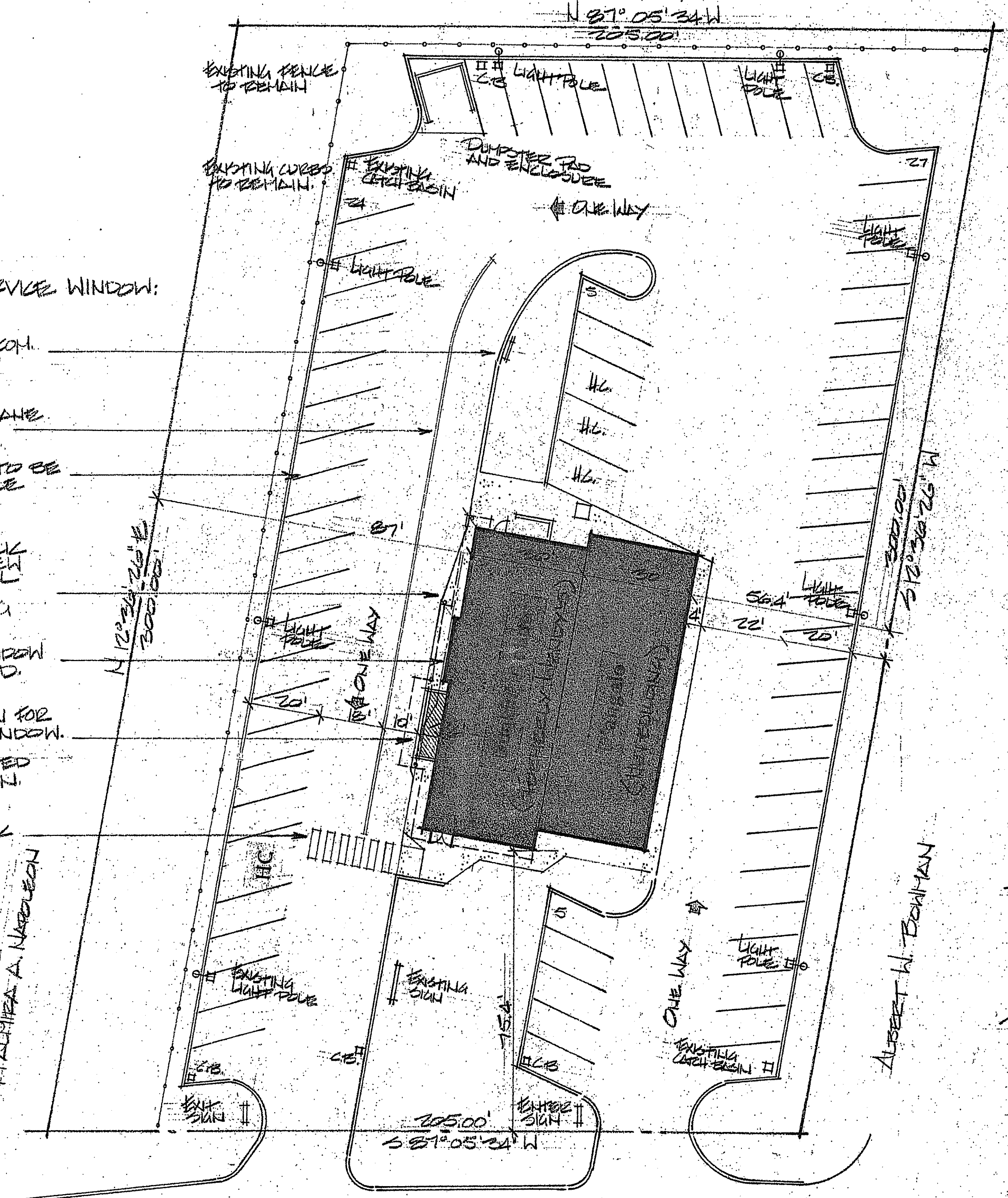
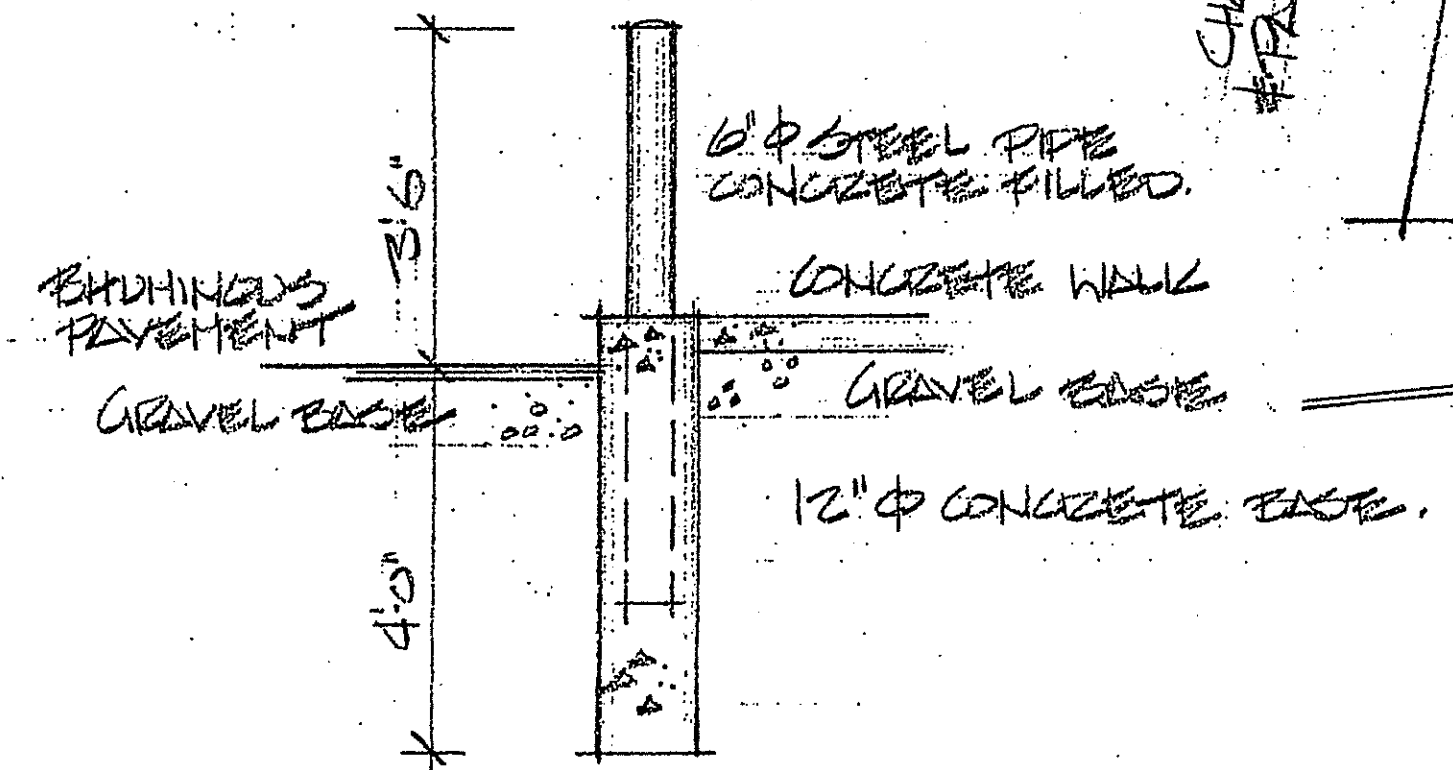
EXISTING PARKING (75') TO BE
STRIPED FOR 65' ANGLE
PARKING.

CONCRETE CURB AND WALK
TO BE EXTENDED AT NEW
DRIVE-THRU. NEW STEEL
PIPE GUARD POSTS AT
CURB LINE AND BUILDING
CORNERS.

EXISTING DRIVE-THRU WINDOW
LOCATION TO BE CLOSED.

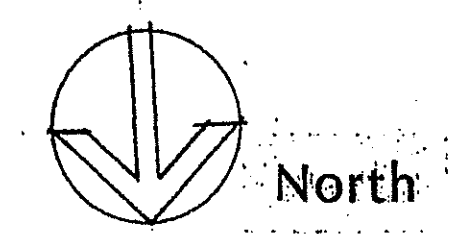
NEW 6'0" x 10'0" ADDITION FOR
DRIVE-THRU SERVICE WINDOW.
EXISTING ROOF FACIA
SYSTEM TO BE EXTENDED
AT DRIVE-THRU ADDITION.

NEW PAINTED CROSSWALK
AND NEW CONCRETE
WALK WITH HANDICAP
ACCESS CURB CUT AT
NEW FRONT ENTRY.
8'0" WALK AND CURB
CUT.



ROUTE 9 BOSTON WORCESTER TURNPIKE

SITE PLAN 1" = 20'-0"



CONING
HIGHWAY BUSINESS DISTRICT
ROAD FRONT YARD 75'
SIDE YARDS 25'
REAR YARD 50'

PARKING:
APPROVED FOR DANIELLO'S
21 SPACES
TAKE OUT 15 SPACES
PROPOSED DUNKIN' DONUTS
20 SPACES
TAKE OUT 9 SPACES
(3 EMPLOYEES)
TOTAL PARKING 57 SPACES
PROPOSED 72 SPACES

HANDICAP ACCESS 3 SPACES
PROPOSED 4 SPACES

PARKING LOT LIGHTING
EXISTING TO REMAIN

STORM DRAINAGE
EXISTING TO REMAIN
(H.C.B. EXISTING CHECK BASINS)

5 SETS
AUG 18, 1980
4 SETS
PRINTED
JUNE 1, 1980